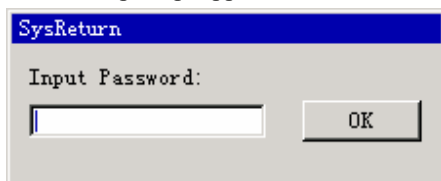


“SysReturn” Uninstall Quick Guide

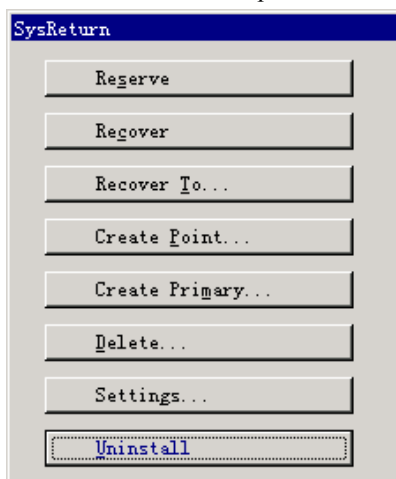
Uninstall under DOS

This command will retrieve the system to the Primary Recovery Point and before uninstall SysReturn.

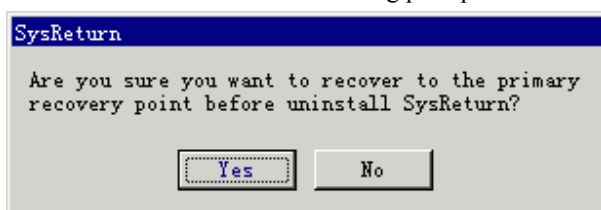
1. Press **Home** key when you start up your computer. The **Input Password** prompt appears:



2. Enter the Password and press **OK** for the following prompt:



3. Press **Uninstall** to enter the following prompt:



4. Click **Yes** to uninstall SysReturn:

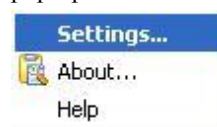


5. SysReturn is successfully uninstalled.

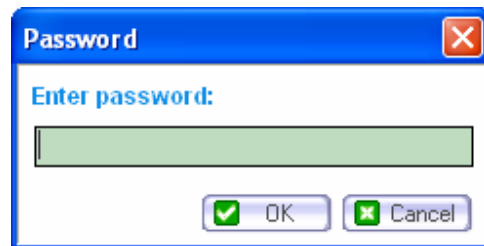
Uninstall under Windows

You may either recover your system to the selected recovery point or save the current settings and information on your computer before you uninstall the SysReturn.

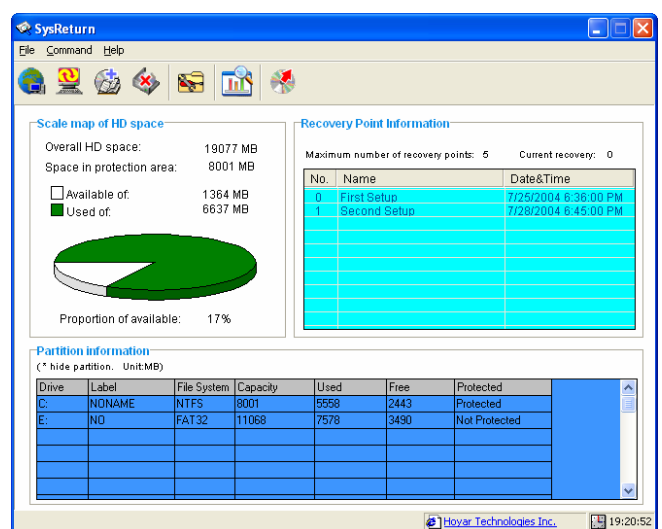
1. Right click SysReturn icon  on task bar for the following pop-up menu:



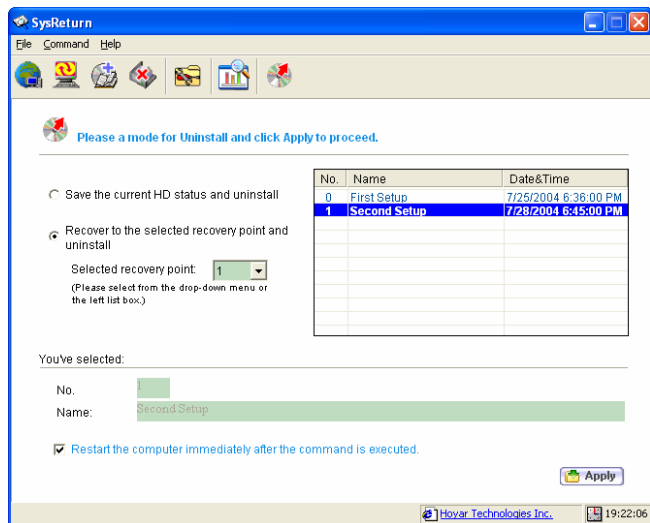
2. Select **Settings...** and the **Password** prompt will appear:



3. Enter the user password then press **OK** to enter **Information** menu:



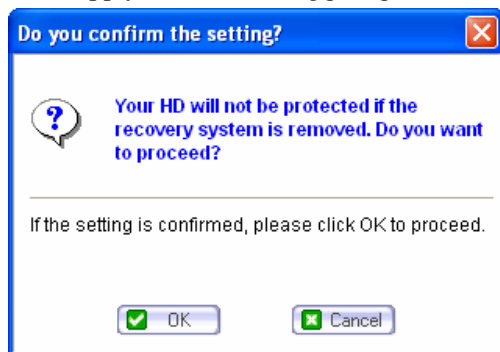
4. Press **Uninstall** icon  to enter **Uninstall** menu as follows:



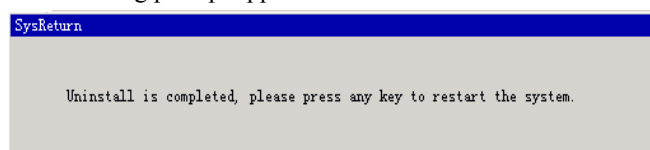
5. If you want to save the current settings and information on you computer before uninstall, please check the option **Save the current HD status and uninstall**.

If you want to recover your system to the selected recovery point before uninstall, please check the option **Recover to the selected recovery point and uninstall**. Then select the desired recovery point.

6. Press **Apply** for the following prompt:



7. Press **OK**. The command takes effect after system reboot and the following prompt appears:



8. Press any key to restart the computer.



Notes:

- Make sure you restart the computer immediately after you proceed with this command.
- A power surge during uninstall might lead to system collapse.