

Rsyncd setup on a windows computer for use with Affa backup

From SME Server

Contents

- 1 Purpose
- 2 Installation
- 3 Configuration
 - 3.1 Configuring the sshd Service
 - 3.1.1 On Windows Vista
 - 3.1.2 On Windows XP, Windows 2000 Workstation and Windows 2000 Server
 - 3.1.3 On Windows Server 2003
 - 3.2 Configuring the rsyncd Service
- 4 Security
- 5 Uninstall
- 6 References

Purpose

Using Cygwin rsync on a Windows computer to backup it remotely over ssh does not work as the Cygwin rsync process hangs. This problem has been reported frequently but was not solved yet. The only known workaround is running the rsync daemon.

This document describes the installation and configuration of the rsync daemon in the cygwin environment on a Windows XP computer for the purpose to backup data using the Affa backup software.

Affa versions 0.9.0 or higher support the rsyncd protocol.

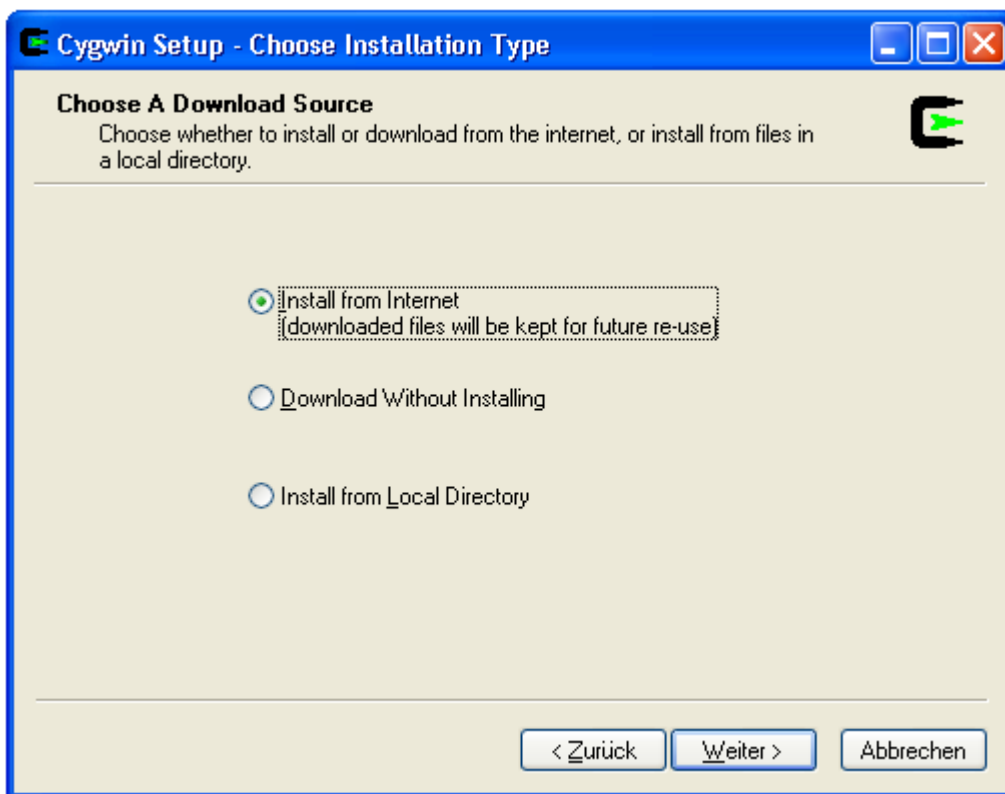
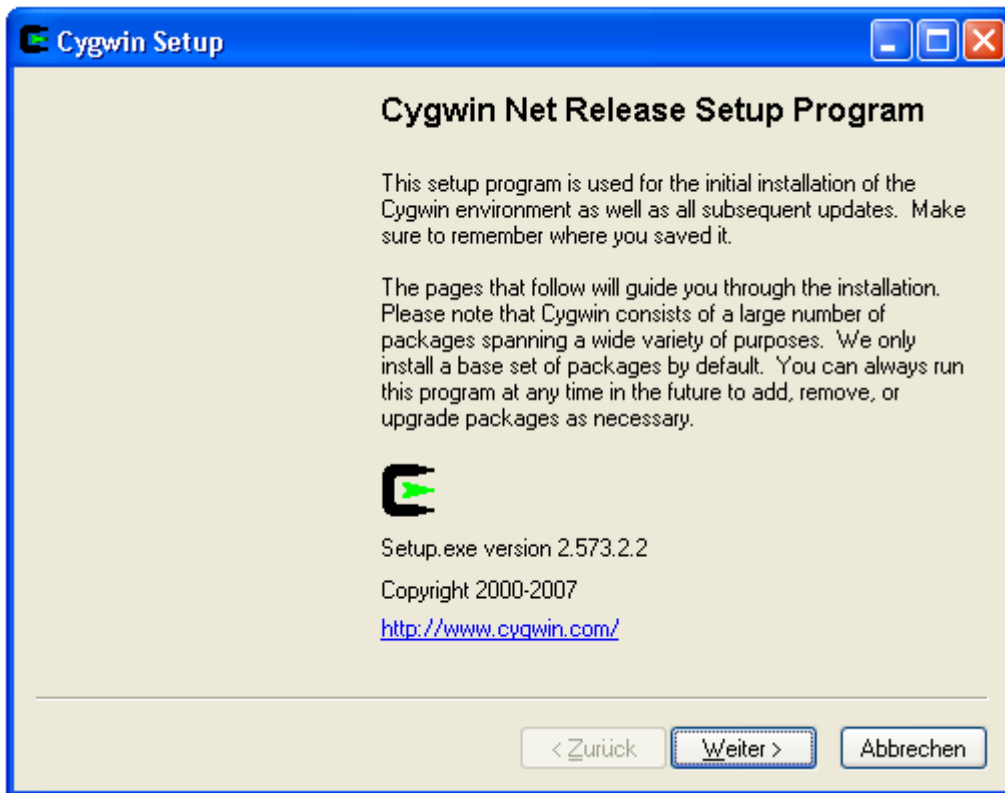


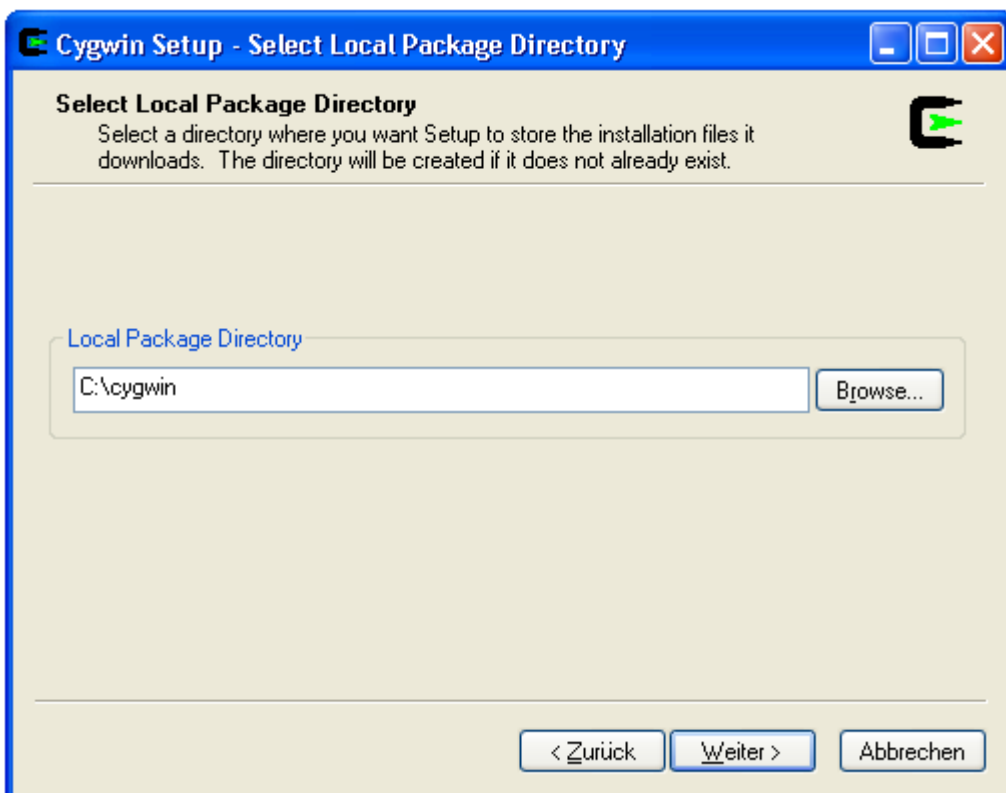
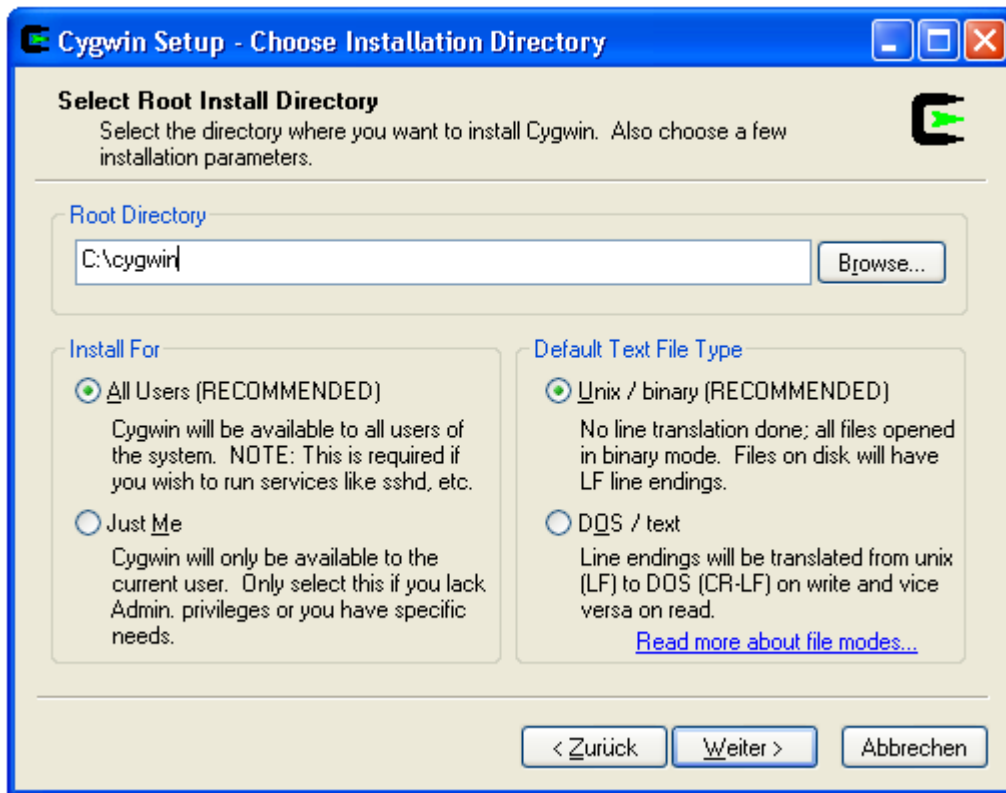
Note:

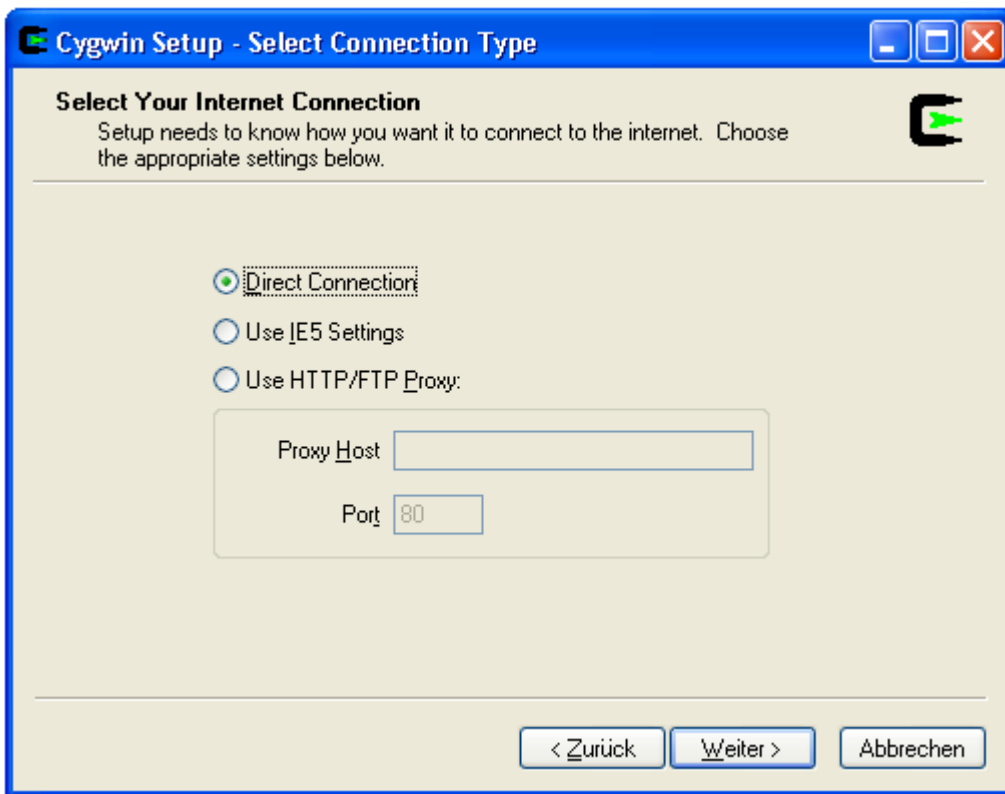
Cygwin requires a Windows OS with NTFS file system. Does not work on FAT32 file system

Installation

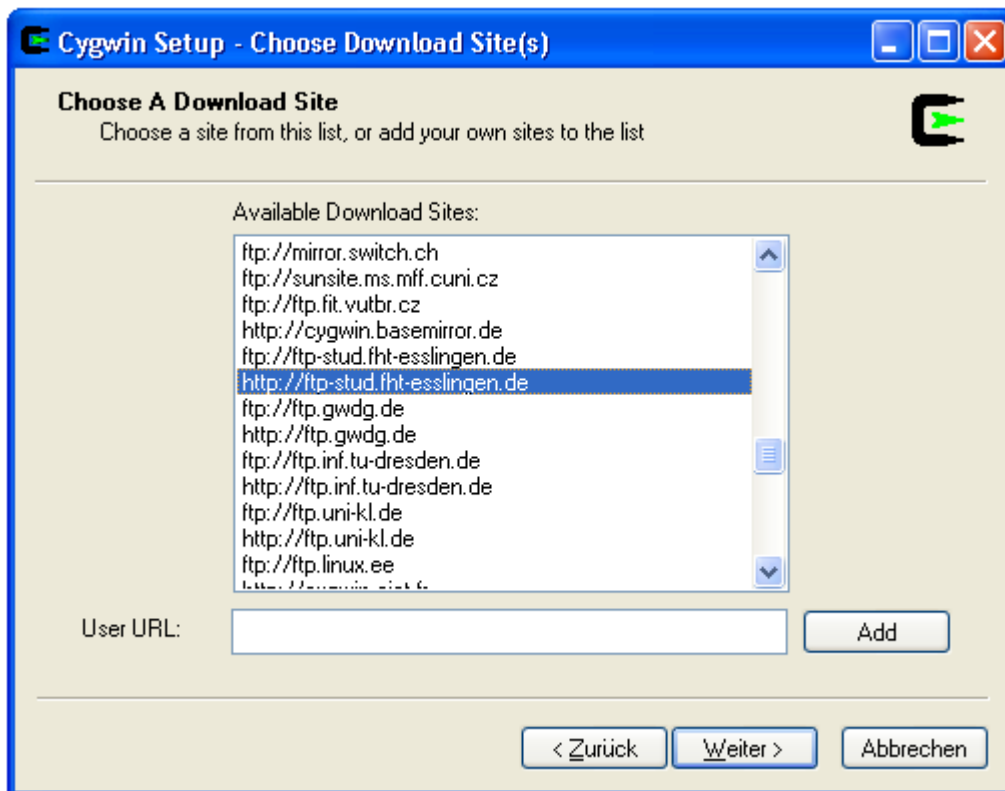
Login with the **local** Administrator account and create a folder C:\cygwin. Save <http://cygwin.com/setup.exe> to this folder and run it:





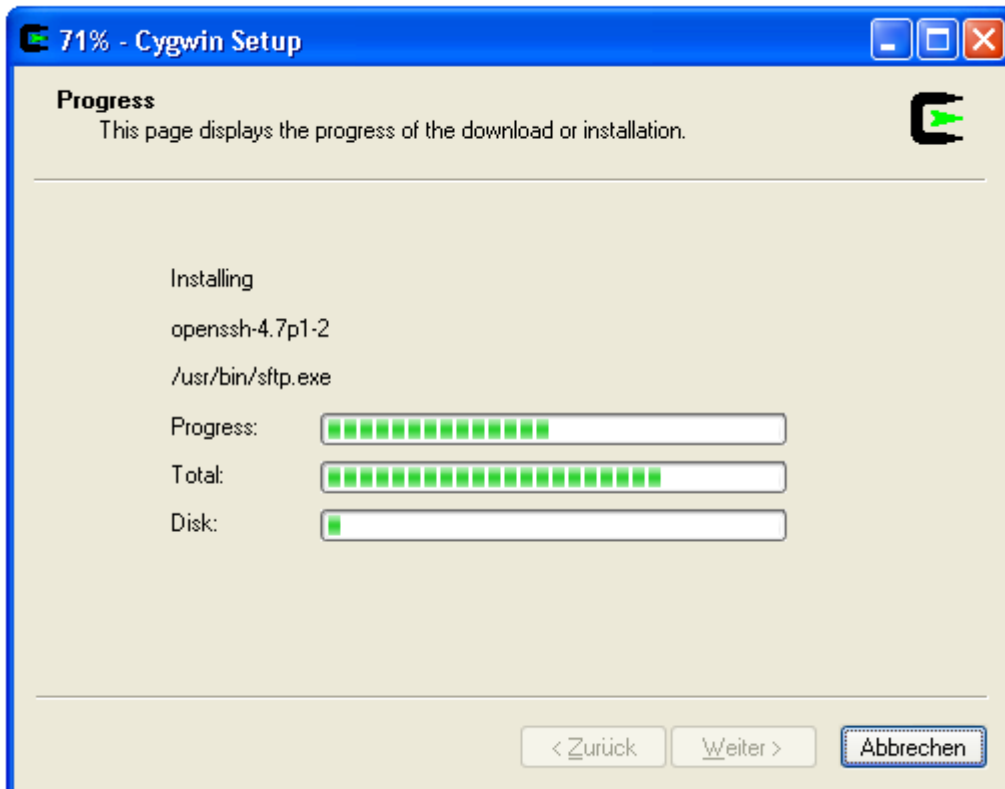
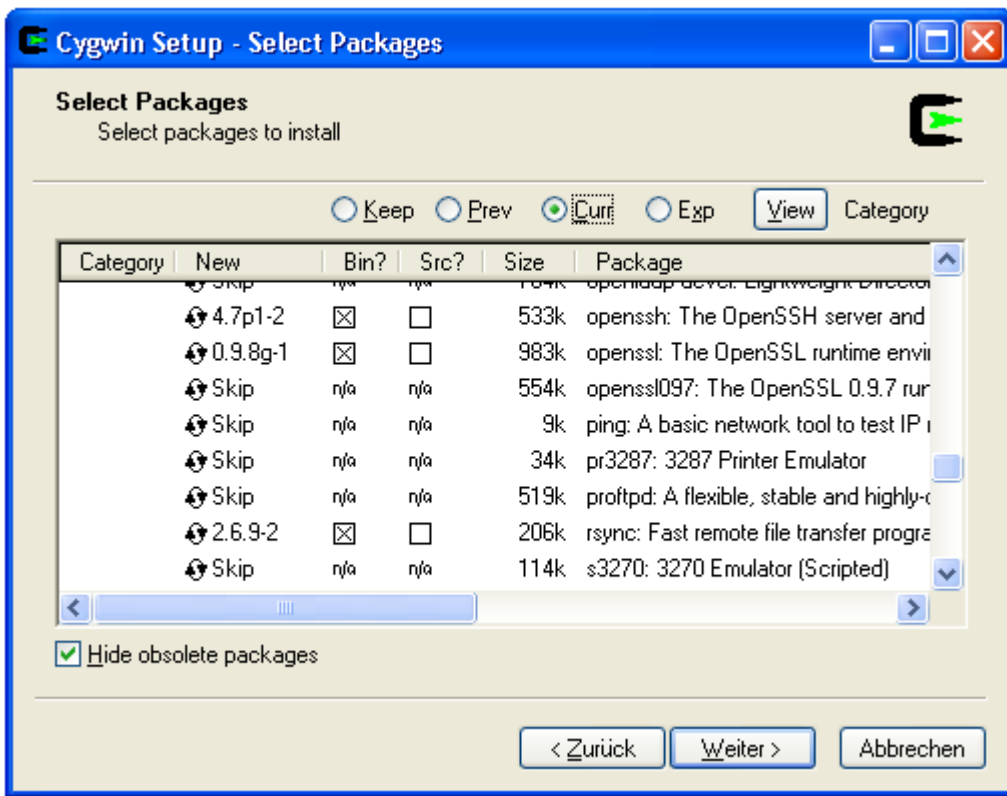


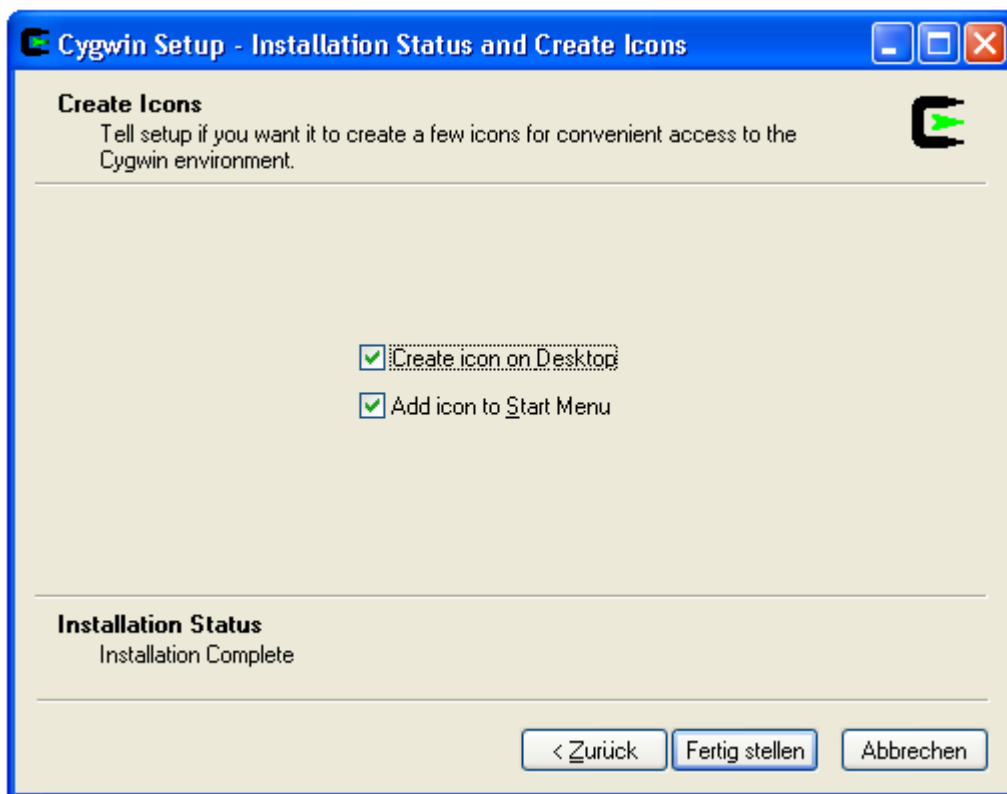
Select a nearby mirror



Select the packages to install (in addition to the already selected defaults):

- from category Net: openssh, rsync
- from category Editor: vim (or any other editor of your choice)
- from category Utils: diffutils





Configuration

Run the *Cygwin Bash Shell* from the *Start Menu*.

Configuring the sshd Service

Note:

The sshd service is not needed for the Affa backup but it is quite useful to have a ssh login for configuration or viewing log files. You can skip this step, if you don't need ssh login.

Run the sshd configuration script.

```
ssh-host-config
```

You are asked a few questions. Answer them as shown in the script dialog below (in bold text).

On Windows Vista

Incomplete:

This article or section needs to be expanded. Please help to fill the gaps or discuss the issue on the talk page

On Windows XP, Windows 2000 Workstation and Windows 2000 Server

```
Generating /etc/ssh_host_key
Generating /etc/ssh_host_rsa_key
Generating /etc/ssh_host_dsa_key
Generating /etc/ssh_config file
Privilege separation is set to yes by default since OpenSSH 3.3.
However, this requires a non-privileged account called 'sshd'.
For more info on privilege separation read /usr/share/doc/openssh/README.privsep.

Should privilege separation be used? (yes/no) yes
Warning: The following function requires administrator privileges!
Should this script create a local user 'sshd' on this machine? (yes/no) yes
Generating /etc/sshd_config file
Added ssh to F:\WINDOWS\system32\drivers\etc\services

Warning: The following functions require administrator privileges!

Do you want to install sshd as service?
(Say "no" if it's already installed as service) (yes/no) yes

Which value should the environment variable CYGWIN have when
sshd starts? It's recommended to set at least "ntsec" to be
able to change user context without password.
Default is "ntsec". CYGWIN=ntsec

The service has been installed under LocalSystem account.
To start the service, call `net start sshd' or `cygrunsrv -S sshd'.

Host configuration finished. Have fun!
```

On Windows Server 2003

Choose a random string for the password. You'll never need it again.

```

Generating /etc/ssh_host_key
Generating /etc/ssh_host_rsa_key
Generating /etc/ssh_host_dsa_key
Generating /etc/ssh_config file
Privilege separation is set to yes by default since OpenSSH 3.3.
However, this requires a non-privileged account called 'sshd'.
For more info on privilege separation read /usr/share/doc/openssh/README.privsep.

Should privilege separation be used? (yes/no) yes
Warning: The following function requires administrator privileges!
Should this script create a local user 'sshd' on this machine? (yes/no) yes
Generating /etc/sshd_config file

Warning: The following functions require administrator privileges!

Do you want to install sshd as service?
(Say "no" if it's already installed as service) (yes/no) yes

You appear to be running Windows 2003 Server or later. On 2003 and
later systems, it's not possible to use the LocalSystem account
if sshd should allow passwordless logon (e. g. public key authentication).
If you want to enable that functionality, it's required to create a new
account 'sshd_server' with special privileges, which is then used to run
the sshd service under.

Should this script create a new local account 'sshd_server' which has
the required privileges? (yes/no) yes

Please enter a password for new user 'sshd_server'. Please be sure that
this password matches the password rules given on your system.
Entering no password will exit the configuration. PASSWORD=Xesp348RfnMes

User 'sshd_server' has been created with password 'Xesp348RfnMes'.
If you change the password, please keep in mind to change the password
for the sshd service, too.

Also keep in mind that the user sshd_server needs read permissions on all
users' .ssh/authorized_keys file to allow public key authentication for
these users!. (Re-)running ssh-user-config for each user will set the
required permissions correctly.

Which value should the environment variable CYGWIN have when
sshd starts? It's recommended to set at least "ntsec" to be
able to change user context without password.
Default is "ntsec". CYGWIN=ntsec

The service has been installed under sshd_server account.
To start the service, call `net start sshd` or `cygrunsrv -S sshd`.

Host configuration finished. Have fun!

```

Start the sshd service

```
net start sshd
```

Don't forget to open port 22 for the IP address of the Affa server in the Windows firewall.

Testing

```
ssh Administrator@localhost
```

Configuring the rsyncd Service

Create the `/etc/rsyncd.secrets` file and add the user affa with password **secretword** separated by a colon. Replace the placeholder **secretword** by a strong password. The user 'affa' does not need to exist on the local system.


```
affa:secretword
```

Set secure permissions on /etc/rsyncd.secrets

```
chown 18.544 /etc/rsyncd.secrets
chmod 660 /etc/rsyncd.secrets
```

Create the /etc/rsyncd.conf configuration file. Replace the placeholder **AFFA_IP** by the ip address of your Affa server.

```
gid = 544
uid = 18
hosts allow = AFFA_IP
auth users = affa
secrets file = /etc/rsyncd.secrets
strict modes = true
read only = true
use chroot = no
transfer logging = true
log format = %h %o %f %l %b
log file = /var/log/rsyncd.log

[AFFA]
path = /cygdrive
comment = cygdrive root dir
```

Uid 18 is the userid of the System account. Gid 544 is the groupid of the Administrators group (may be shown as root/gid 0 on the Cygwin console).

Install rsyncd as a service.

```
cygrunsrv --install "rsyncd" --path /usr/bin/rsync --args "--daemon --no-detach" \
--desc "Starts a rsync daemon for accepting incoming rsync connections" \
--disp "Rsync Daemon" --type auto
```

Start the rsyncd service

```
net start rsyncd
```

Don't forget to open port 873 for the IP address of the Affa server in the Windows firewall.

Testing

Login the Affa server and run the following command, where **IP_ADDRESS** is the IP address of the Windows computer.

```
rsync -av affa@IP_ADDRESS::'AFFA/'
```

You should receive a file list of all your drives.

Security

The rsync daemon protocol does not provide any encryption of the data that is transferred over the connection. Use it only in the local net or VPN.

Uninstall

- Login with the local Administrator account and run the *Cygwin Bash Shell*
- Stop services

```
net stop sshd  
net stop rsyncd
```

- Uninstall services

```
sc delete sshd  
sc delete rsyncd
```

- Remove local user sshd

```
net user /delete sshd
```

- Remove local sshd_server (*Windows 2003 server only*)

```
net user /delete sshd_server
```

- Close the *Cygwin Bash Shell*
- Remove folder c:\cygwin

References

- Affa Contrib
- <http://marc-abramowitz.com/archives/2007/10/14/solving-rsync-hangs-with-cygwin/>

Retrieved from "http://wiki.contribs.org/Rsyncd_setup_on_a_windows_computer_for_use_with_Affa_backup"
Categories: Incomplete | Backup | Howto

- This page was last modified on 22 December 2008, at 22:19.
- Content is available under GNU Free Documentation License 1.2.