

WireFusion

Quick Tutorial for WF-SlideShow

NOTE: In order to use WF-SlideShow you need an installed version of WireFusion 4.0 (or later) on your computer.

1 Install WF-SlideShow

1. Start 'WireFusion'
2. Choose *File > Install Add-on...*
3. Browse for the plug-in file '*wf-slideshow_v12.wpl*'
4. When the add-on splash window appears, click either *Tryout Mode* or *Register*
5. Restart *WireFusion*

After installation you will find the SlideShow object under the *Multimedia* tab in the Library (Figure 1).

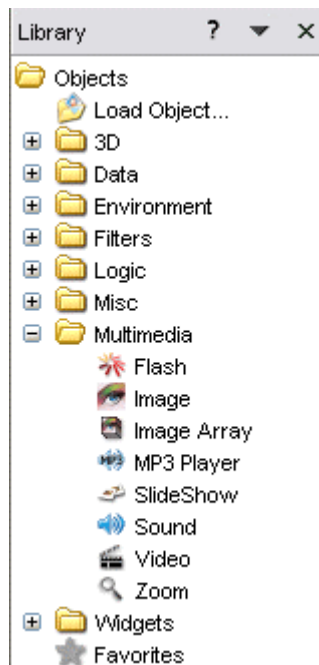


Figure 1. The SlideShow object in the Multimedia folder

2 Create a simple slide show

To make a slide show, drag the SlideShow object into the *Script Area* (Figure 2).

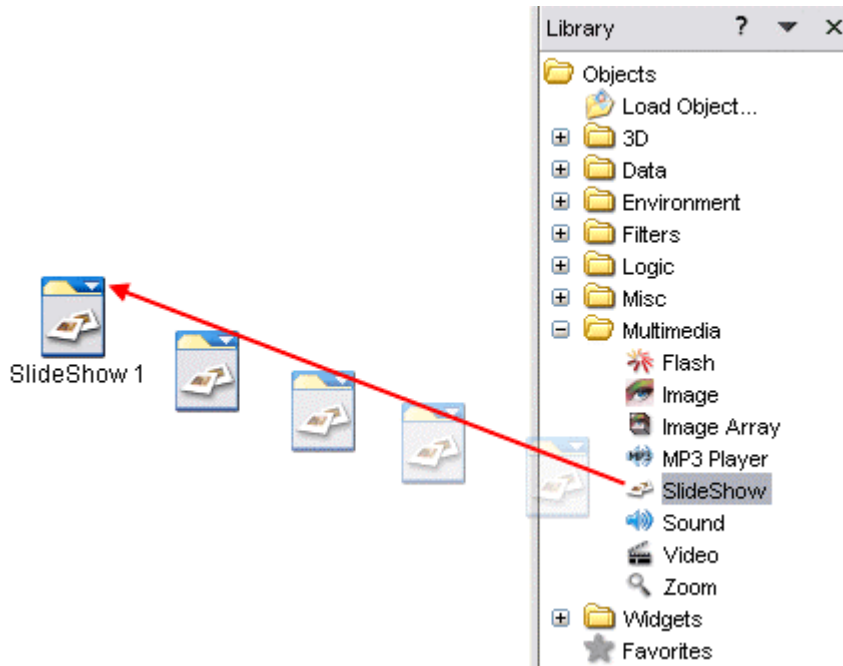


Figure 2. Drag-and-drop of the SlideShow object into the Script Area

The SlideShow dialog window will open (Figure 3) when you drop the object in the Script Area.

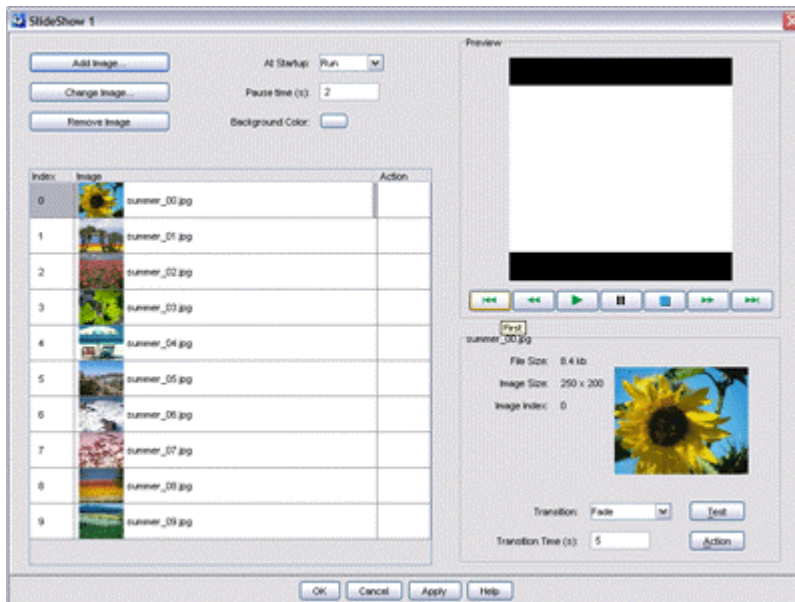


Figure 3. The SlideShow dialog

NOTE: For SlideShow reference help, click the *Help* button.

In the dialog, insert your slides (images) by clicking the *Add Image...*-button. All your images will be visible in the image list. If you want to sort the images, use the *Up* and *Down* arrows, found above the image list (Figure 4).

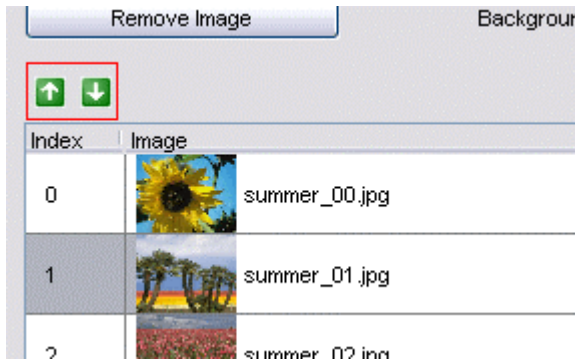


Figure 4. Sort with the Up and Down arrows

At the top of the dialog you will find a drop down menu called *At Startup*. Here you can decide what the SlideShow should do at the presentation start. Choose *Loop*, this will automatically start the slide show and it will re-start the slide show when it reaches the end (the last slide).

You can change the pause time for the slide show, i.e. the time between each transition, in the field called *Pause time (s)*. Default pause time is 2 seconds.

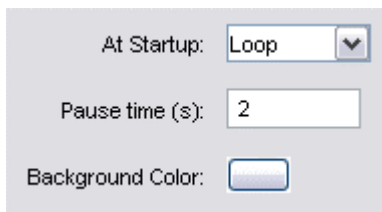


Figure 5. General settings

By default, all images have the transition effect *Fade* selected and have a transition time of 5 seconds. To change the settings for an image, i.e. to change transition effects, transition time and to add actions, select an image from the image list. The settings will be displayed below the preview window (Figure 6).

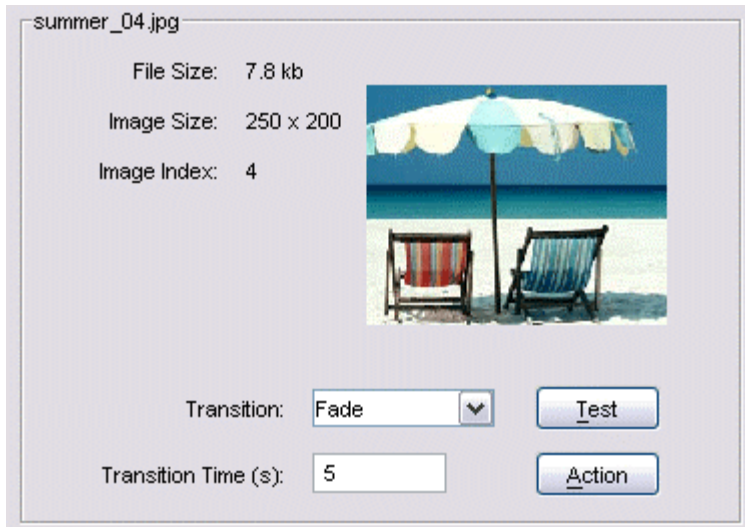


Figure 6. Image properties

To add an action to a specific slide, click the *Action* button (Figure 7).

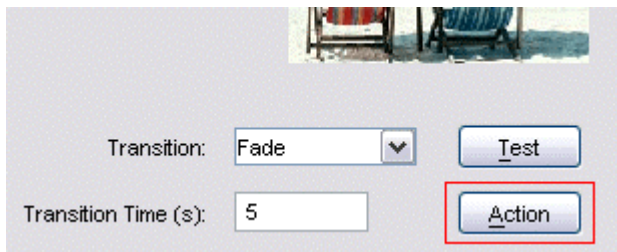


Figure 7. The Action button

The action dialog opens (Figure 8).

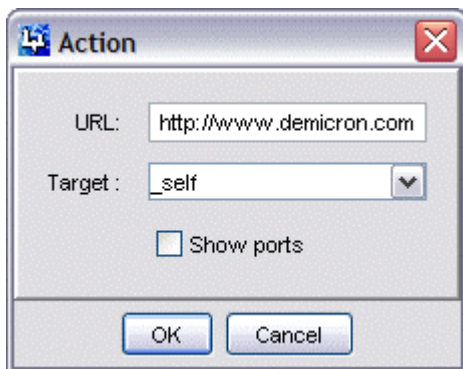


Figure 8. The Action dialog

If you want the slide show to jump to a specific URL when the image is displayed and clicked, enter an address and a target in the action dialog. If you want to make more advanced programming, mark the *Show ports* checkbox. A set of out-ports and one in-port, for the specific image, will now be visible in the object menu. For more advanced WireFusion programming, please read the WireFusion manual and/or the different tutorials found at: <http://www.demicron.com/support/learning>

When you are ready with your slide show settings, click the OK button to close the dialog.

Resize the SlideShow *Target Area* to a desirable size (Figure 9), and then press F9 to preview your slide show (or Ctrl-F9 to preview it in the default browser).

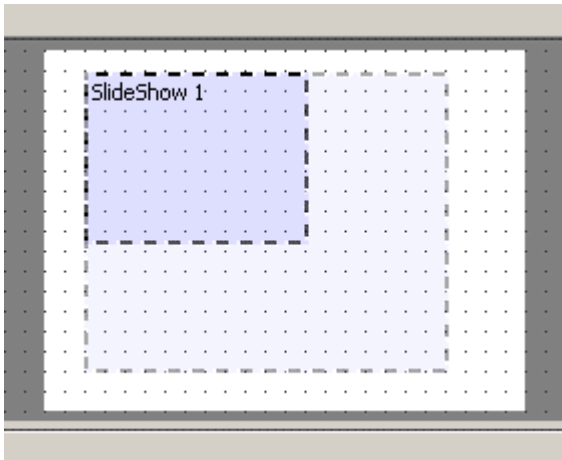


Figure 9. Target Area

NOTE: Before publishing your slide show, make sure to use the *Loading Manager* to reduce the presentation startup time.

As your slide show probably will contain several images, there is a risk that your total presentation will be quite heavy to load, at least if you preload all slide images before the presentation starts. By using the Loading Manager, you can decide which images that should be preloaded and which that should be streamed into the presentation after the startup.

To start the Loading Manager, choose *Project > Loading Manager...*
Then move all your slide images, except for the first slide, to the *Streamed files* side (Figure 10).

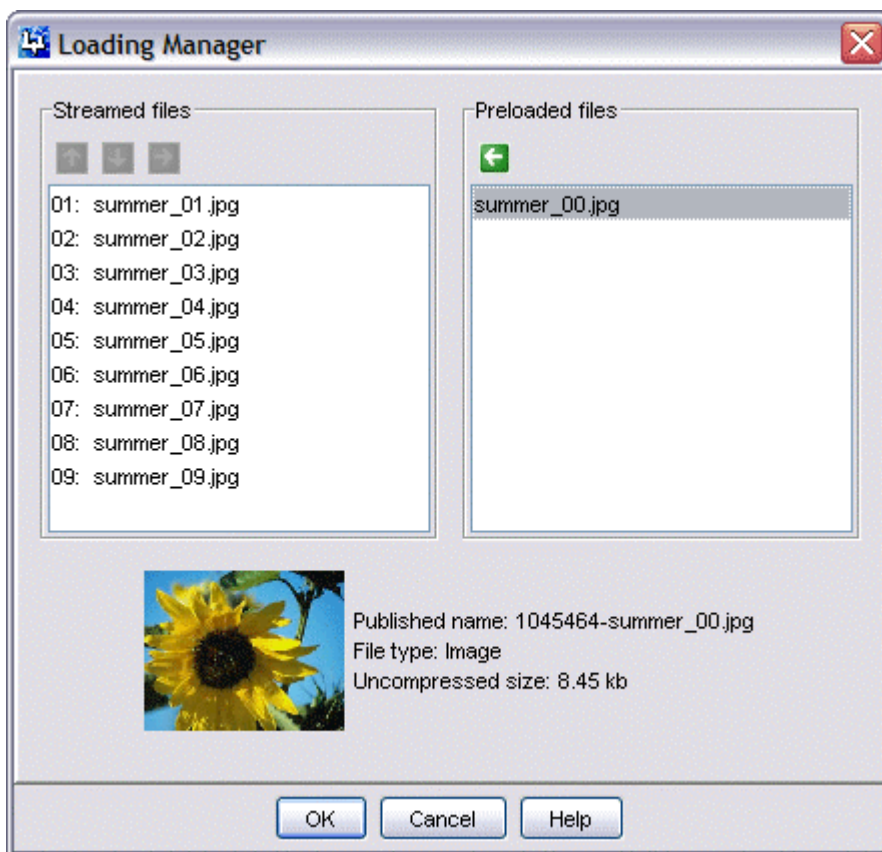


Figure 10. Loading Manager

To publish your slide show to an HTML file, choose *File > Publish...* (Figure 11).

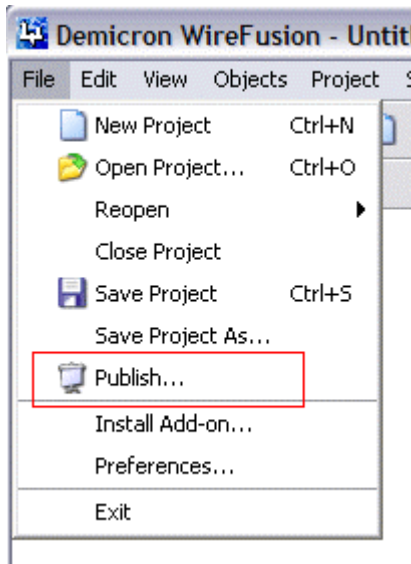


Figure 11. Publish

When the *Publish* dialog appears, choose a name for your presentation and a location to publish it to (Figure 12).

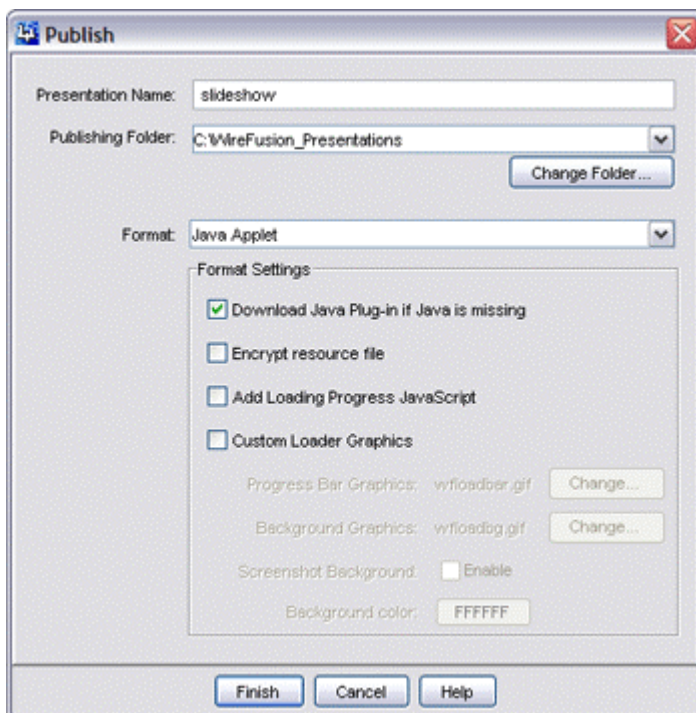
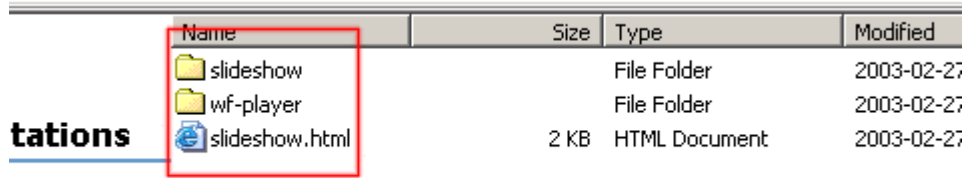


Figure 12. Publish dialog

Browse your hard disk for the published slide show. To run it on the web, upload the HTML file, its resource directory 'slideshow' and the 'wf-player' directory (Figure 13), with all its contents, to your web server. Done!



Name	Size	Type	Modified
slideshow		File Folder	2003-02-27
wf-player		File Folder	2003-02-27
slideshow.html	2 KB	HTML Document	2003-02-27

tations
its description.

Figure 13. The published slide show